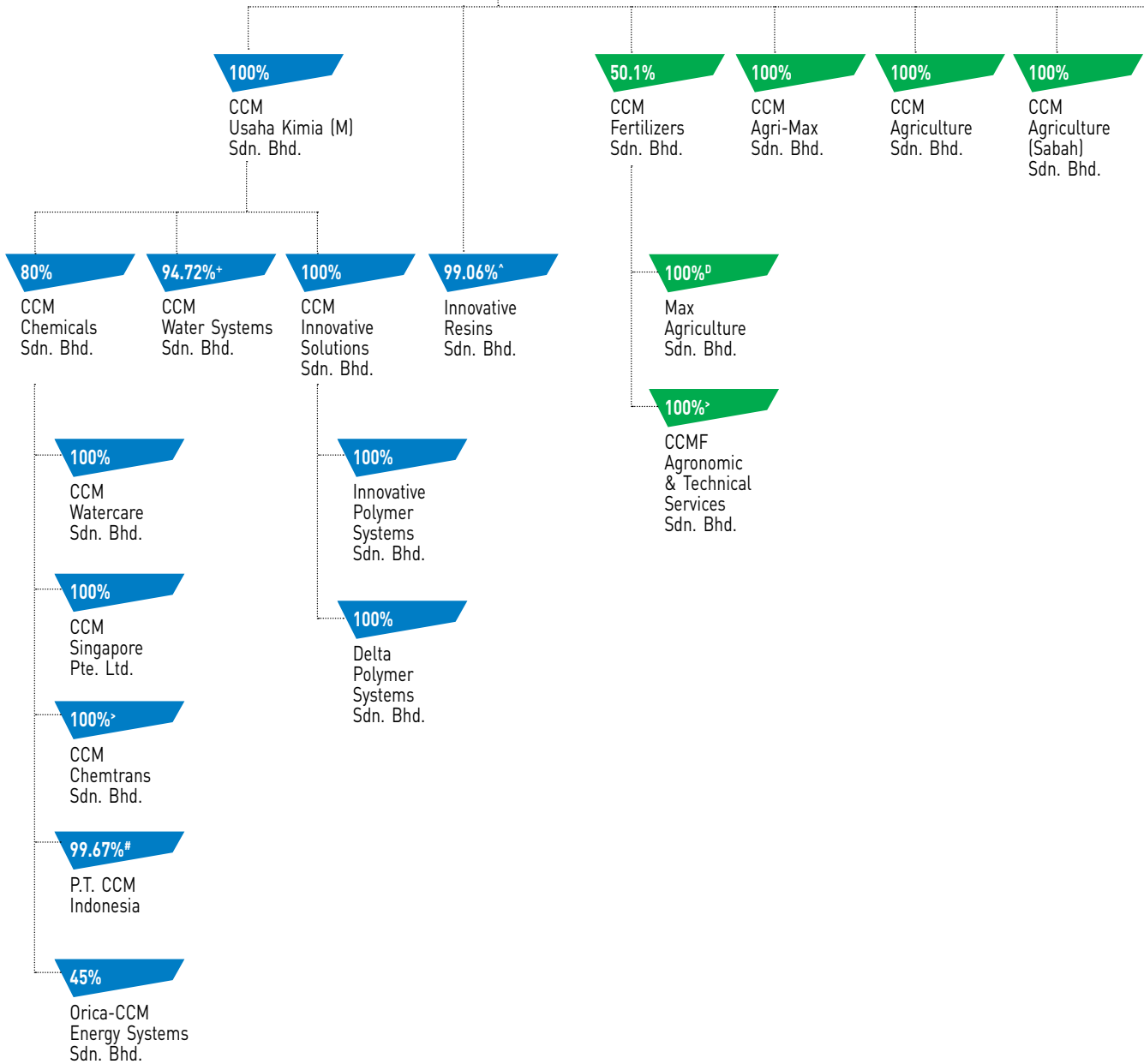
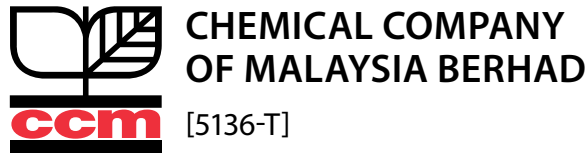
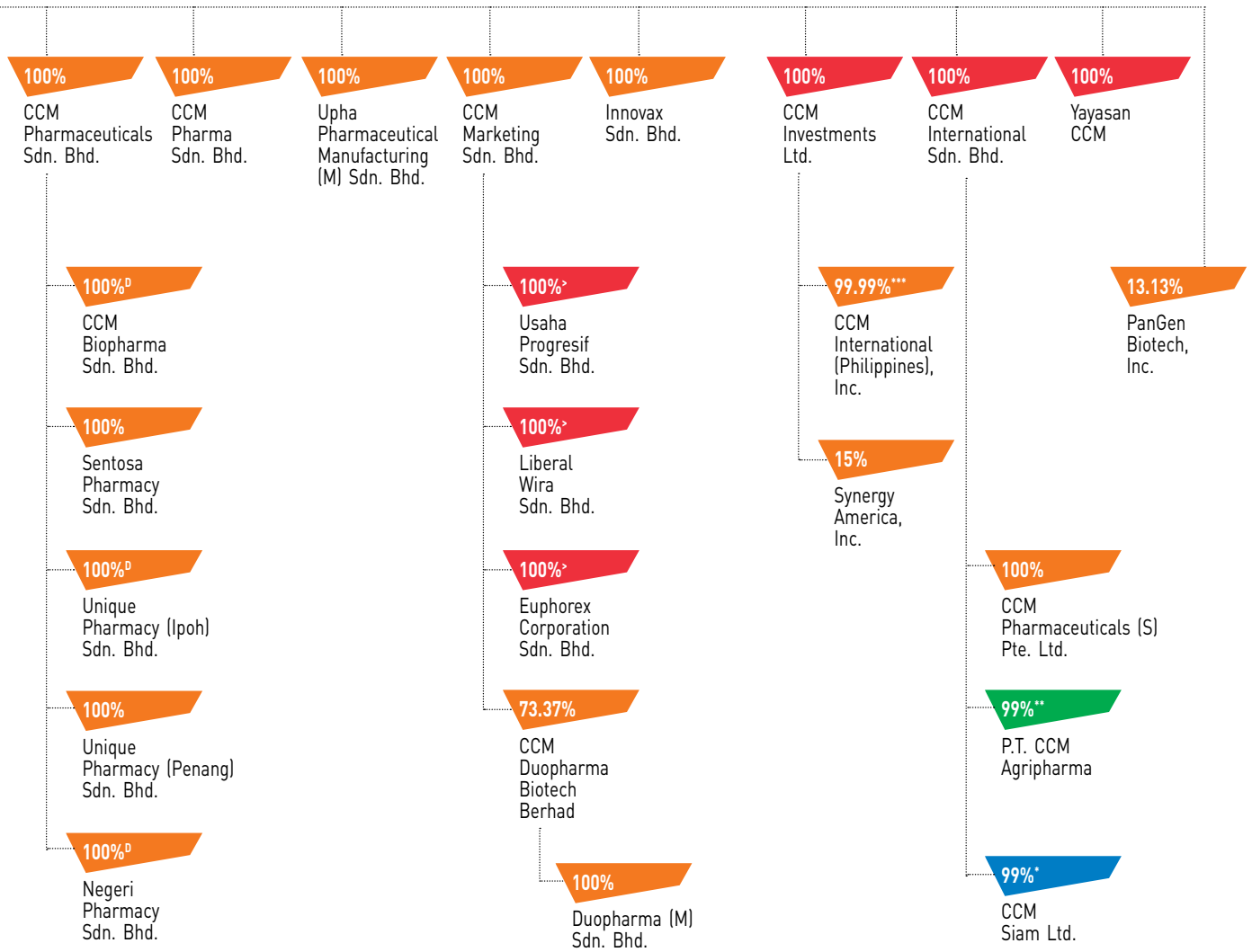






GROUP Structure
as at 31 March 2014



GROUP Structure
as at 31 March 2014



* 0.01% is held by 6 wholly-owned subsidiaries of CCM
 ** 0.01% is held by CCM
 *** 0.01% is held by 3 nominees of CCM
 # 0.33% held by CCM Watercare Sdn. Bhd.
 + 5.28% held by CCM
 ^ 0.94% held by CCM Usaha Kimia (M) Sdn. Bhd.
^D Dormant Companies
^{*} In Liquidation

 Pharmaceuticals Division
 Fertilizers Division
 Chemicals Division
 Others