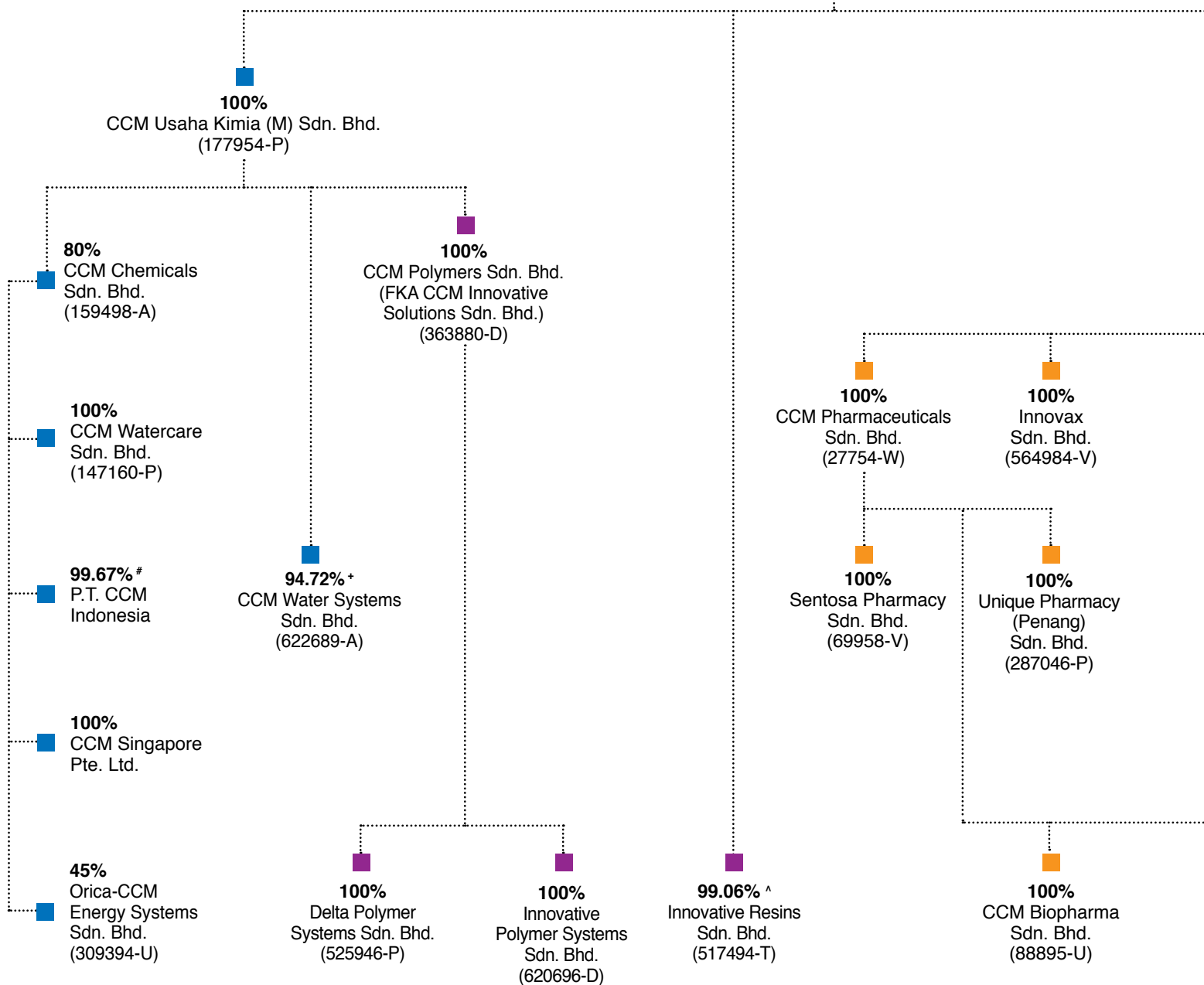


GROUP STRUCTURE

as at 31 March 2017

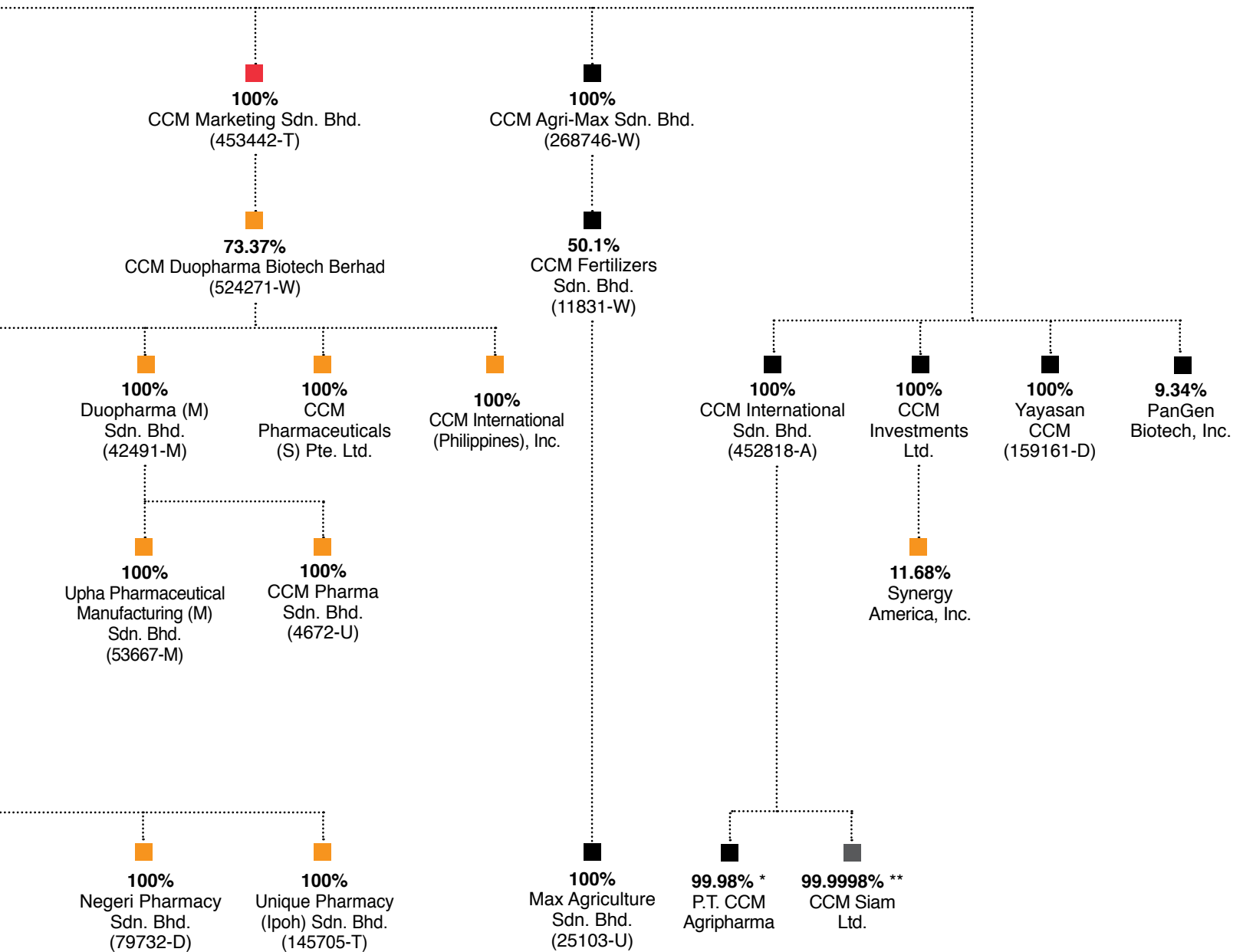


CHEMICAL COMPANY
OF MALAYSIA BERHAD
(5136-T)



- # 0.33% held by CCM Watercare Sdn. Bhd.
- + 5.28% held by CCM
- ^ 0.94% held by CCM Usaha Kimia (M) Sdn. Bhd.
- * 0.02% held by CCM
- ** 0.0001% held by CCM Marketing Sdn. Bhd. and 0.0001% held by Innovative Resins Sdn. Bhd

- Chemical Company of Malaysia Berhad
- Pharmaceuticals Business
- Chemicals Business
- Polymers Business
- Others







ENHANCING SUSTAINABILITY

We ensure that the principles of sustainable development are embedded in our activities and products to protect the future by making the right choices in caring for the environment and the community we operate in.

